

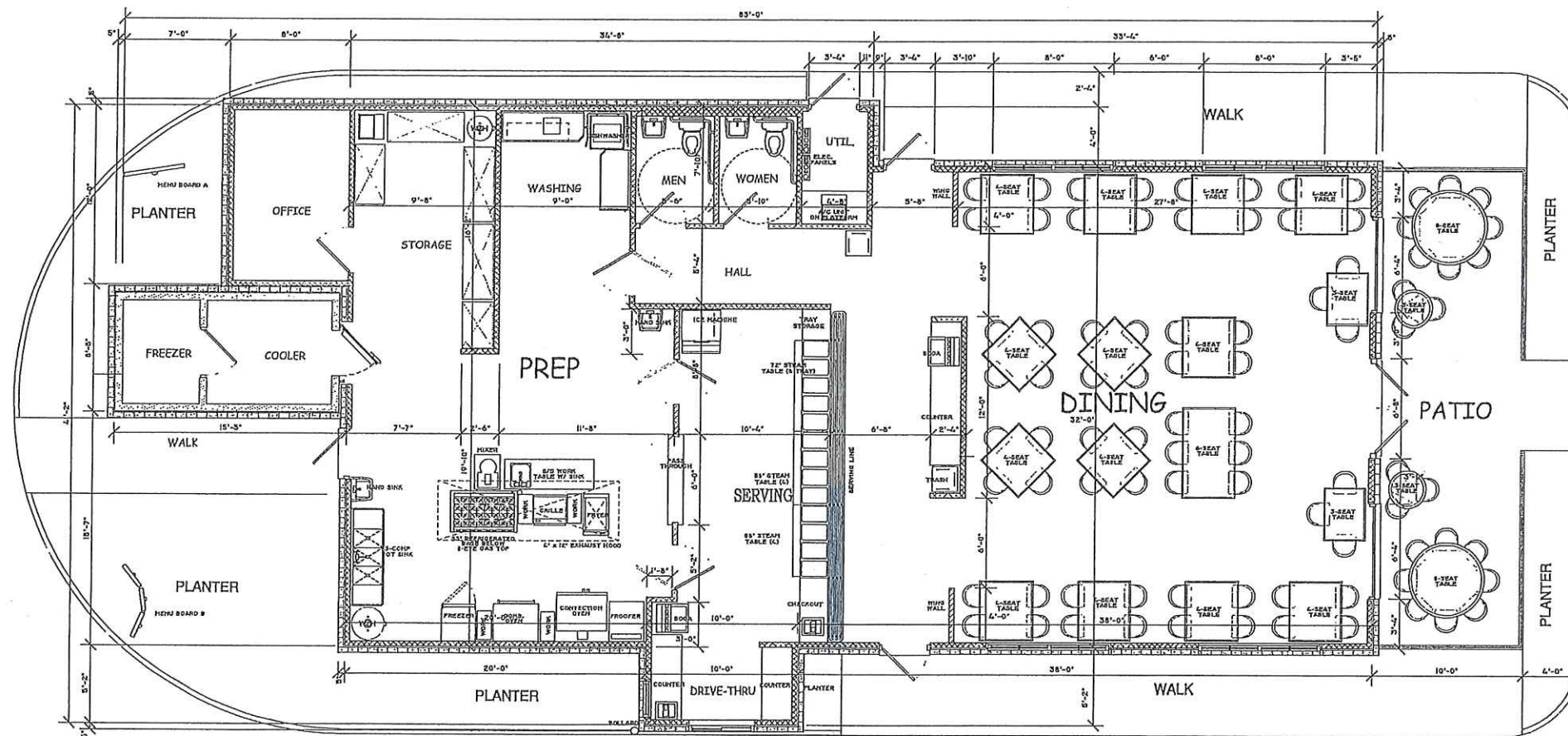
SITE PLAN

SCALE 1" = 20'-0"



| | | | |
|---|------|-------------------------|------|
| PRELIMINARY SITE PLAN | | DEVELOPMENT FOR | |
| Alton B. Clingan, Jr. | | JACKIE'S INTERNATIONAL | |
| Architect | | Gluckstadt, Mississippi | |
| 5144 Reddoch Drive Jackson, Mississippi 39211-4538 Phone and Fax (601) 713-0993 e-mail: altonbcjingan/architect@outlook.com ALL MATERIAL HEREIN © 2021 ALTON B. CLINGAN JR. | | Date 06/04/21 | Page |
| Drawn RKC | Rev. | Rev. | of |
| Check | Rev. | Rev. | |

| | |
|-----------------------|--|
| 8-eye gas top | 256,000 BTU |
| 53" refrigerator base | 1/5 HP motor |
| Gas Grille | 81,000 BTU |
| Gas fryer | 110,000 BTU |
| Mixer | 220V, 3 HP |
| Freezer | 115V, 1/2 HP |
| Combination oven | 115V, 9 Amp, 3/4" water conn, 80,000 BTU |
| Convection oven | 220V, 3 Amp, 3/4" gas conn, 3/4" water conn 15 Amp dedicated circuit |
| Proofer | 120V, 15 Amp |
| Dishwasher | 240V, 60 Amp, 3 phase, 1/2" gas conn, 3/4" water conn |
| Ice Machine | 240V, 20 Amp, 3 phase, 3/8" water |
| Steam Tables (gas) | 72" (5 tray) - 30,000 BTU, 3/4" gas 58" (4 tray) - 30,000 BTU, 3/4" gas |



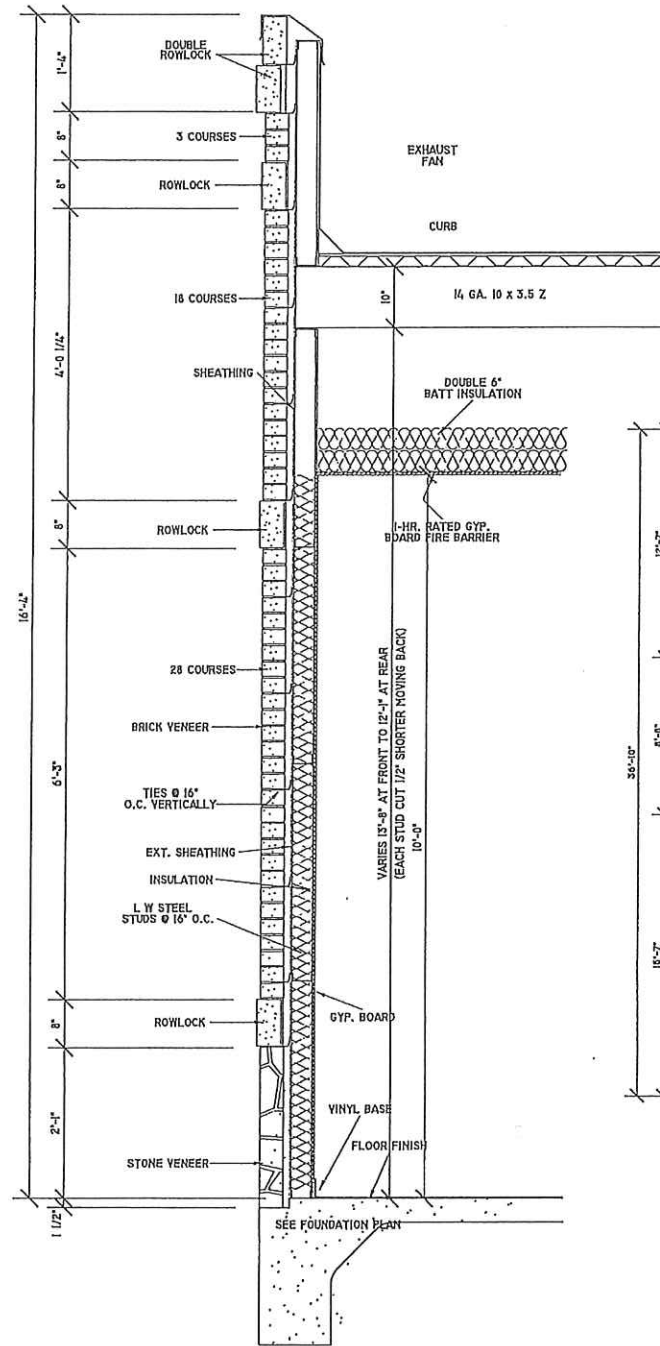
FLOOR PLAN

SCALE 1/4" = 1'-0"

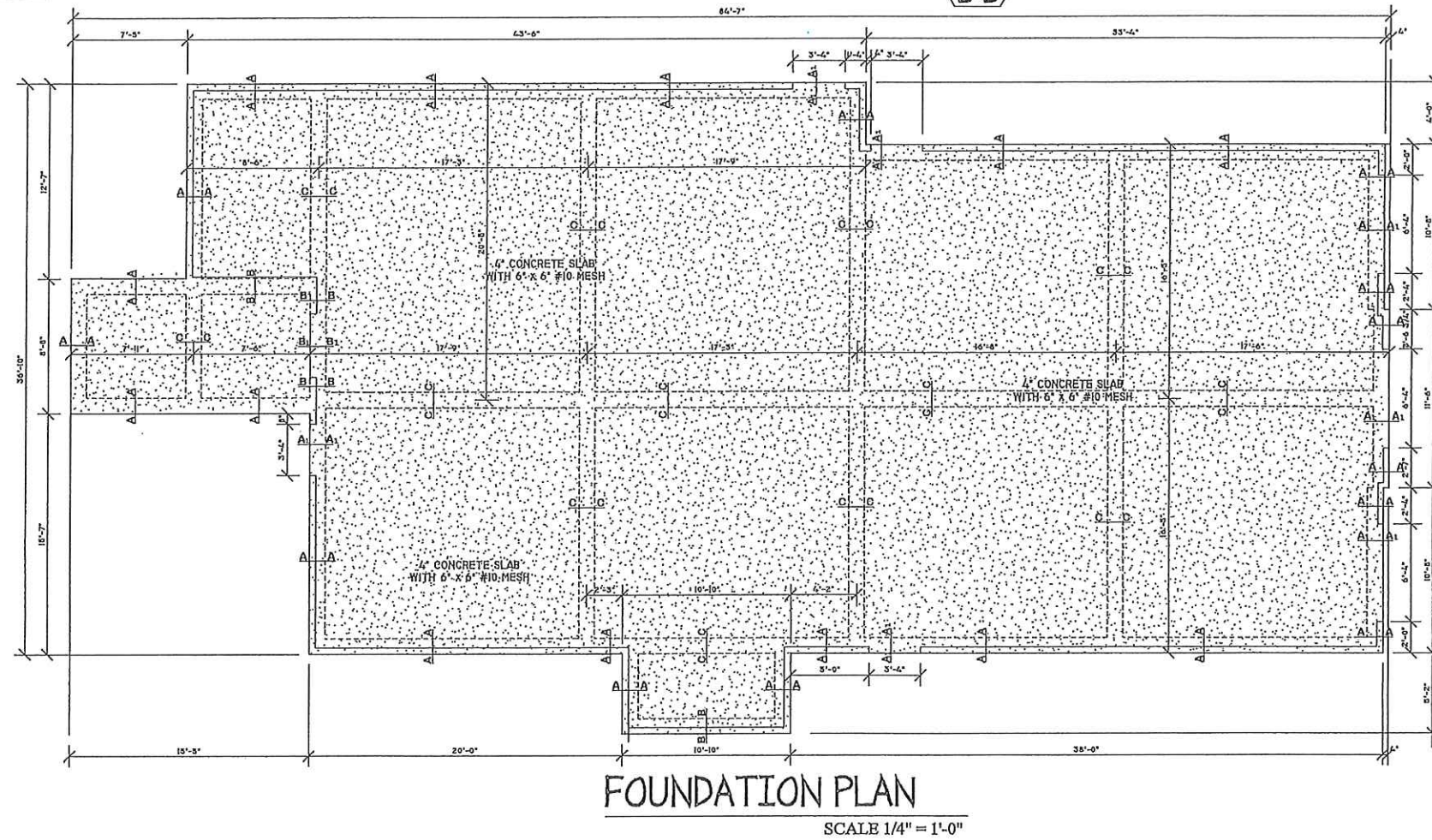
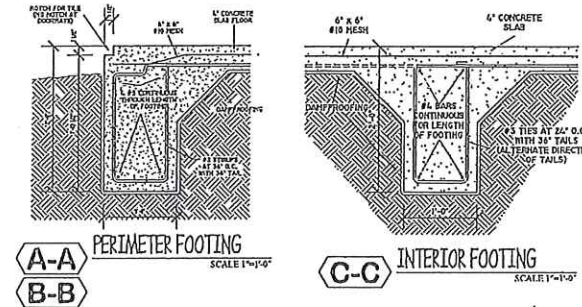


FLOOR PLAN
clingan and associates
architect
 5339 I-55 NORTH, STE. 110B
 JACKSON, MISS. 39206-4141
 PHONE AND FAX 601-713-0993
 E-MAIL: clinganassociates@live.com
 ALL PATENT, TRADE OR COPYRIGHT RIGHTS RESERVED

| | |
|--|-------------------|
| GREENFIELD PLACE Greenfield Rd. Brandon, Mississippi | |
| Doc 07/15/16 | Rev. 10/05/16 RKC |
| Draw RKC | Rev. 02/01/17 RKC |
| Check | Rev. 05/11/17 RKC |



BUILDING SECTION
SCALE 1" = 1'-0"



FOUNDATION PLAN
SCALE 1/4" = 1'-0"



FOUNDATION PLAN AND SECTION

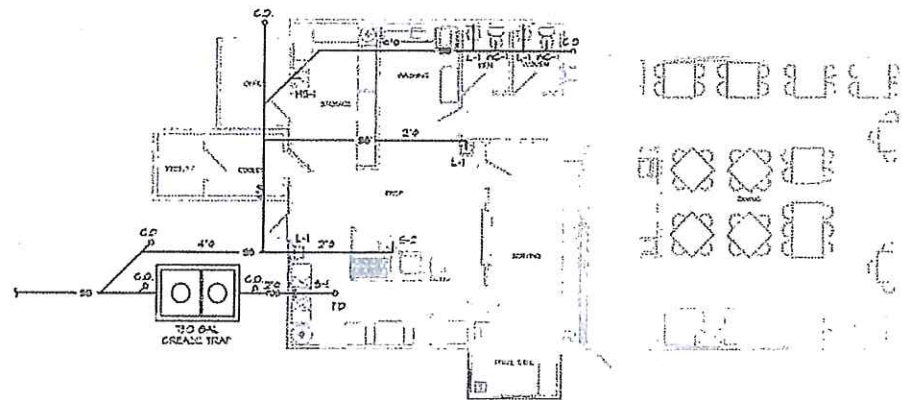
clingan and associates
architect

5339 I-55 NORTH, STE. 110B
JACKSON, MISS. 39206-4141
PHONE AND FAX 601-713-0993
E-MAIL: clinganassoc1@att.net

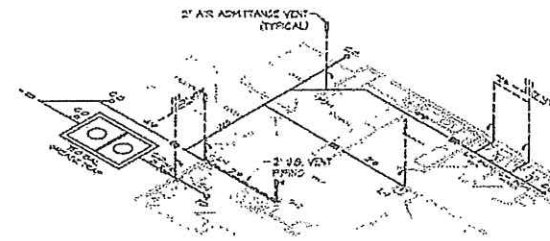
ALL MATERIAL HEREIN © 2017 CLINGAN AND ASSOCIATES ARCHITECT

GREENFIELD PLACE
Greenfield Rd.
Brandon, Mississippi

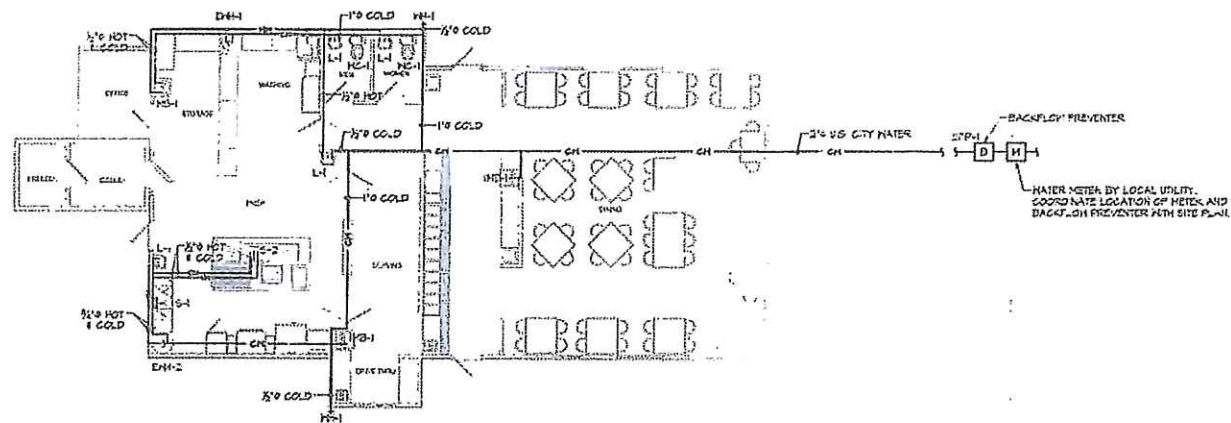
| | | | | |
|---------|----------|------|--------------|------|
| Date | 07/05/16 | Rev. | 07/27/16 RKC | Page |
| Drawn | RKC | Rev. | 07/27/16 RKC | 1 of |
| Checked | | Rev. | 05/23/17 RKC | |



WASTE & VENT PLAN
SCALE 1/8" = 1'-0"



WASTE & VENT ISO
SCALE 1/8" = 1'-0"



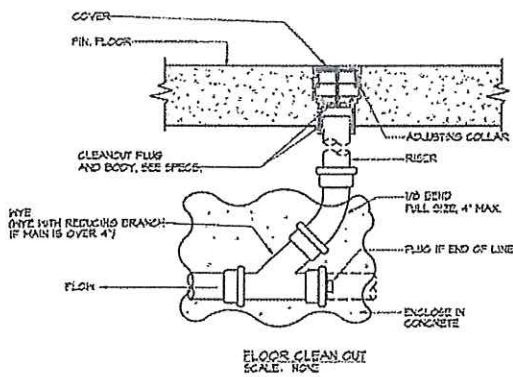
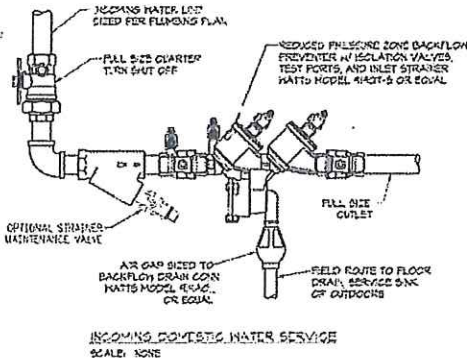
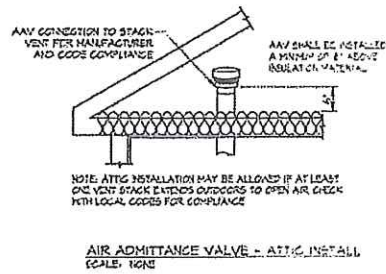
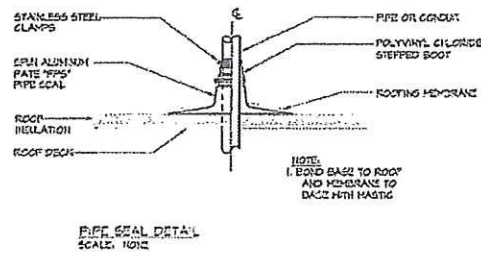
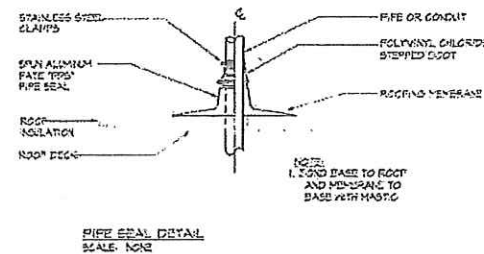
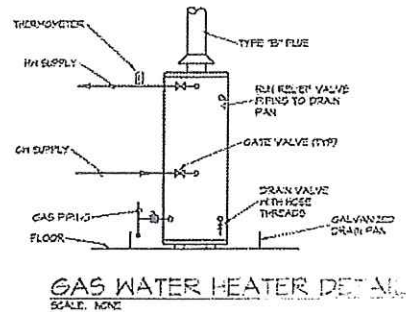
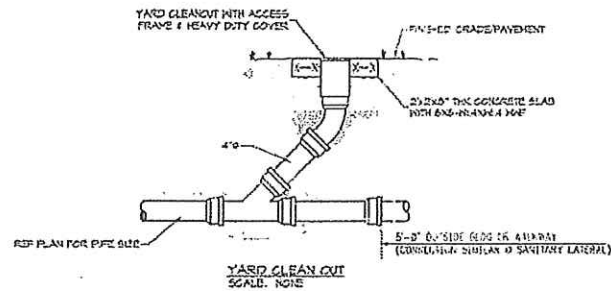
PLUMBING PLAN
SCALE 1/8" = 1'-0"

| PIPING LEGEND | |
|---------------|-------------------------|
| | COLD WATER PIPING |
| | HOT WATER PIPING |
| | BAL. SERV. PIPING |
| | FAT OIL & GREASE PIPING |
| | VENT PIPING |

Handwritten signature and stamp

| | | |
|--|---|--|
| Thomas E Licensed Professional Engineer 6422 State Drive Memphis, TN 38119 Phone: (901) 341-1991 Email: thomas@tcl.com | PLUMBING PLANS <i>clingan and associates</i> architect | FRESH MARKET CAFE Greenfield Road, Brandon MS |
| | 5339 I-55 NORTH, STE. 1100 JACKSON, MISS. 39206-4141 PHONE AND FAX: (601) 712-4221 EMAIL: clinganassociates@live.com <small>ALL MATERIAL HEREIN © 2010 CLINGAN AND ASSOCIATES ARCHITECT</small> | Date: 10/16/10 Drawn: [initials] Check: [initials] Title: P-1 |

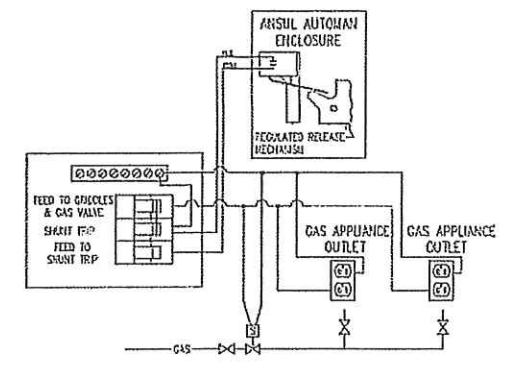
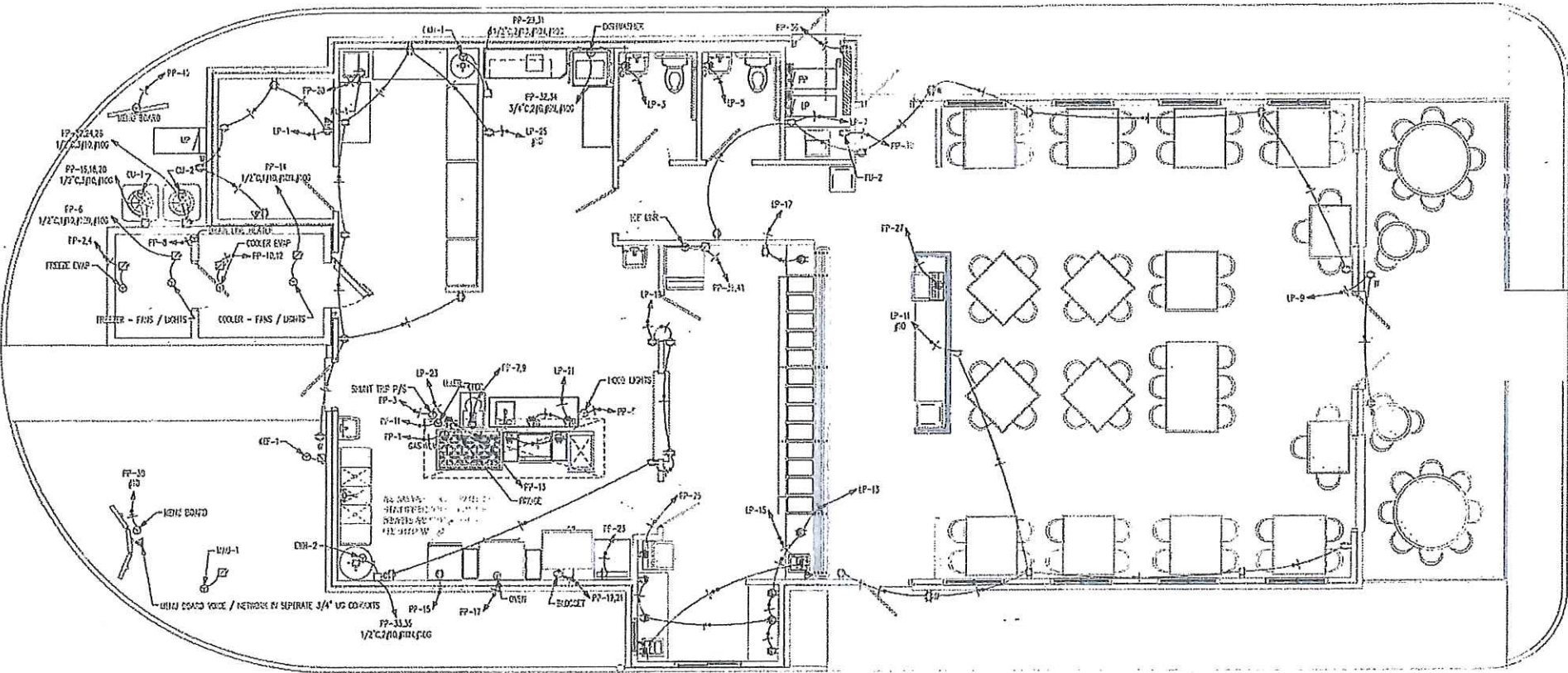
9
of
26



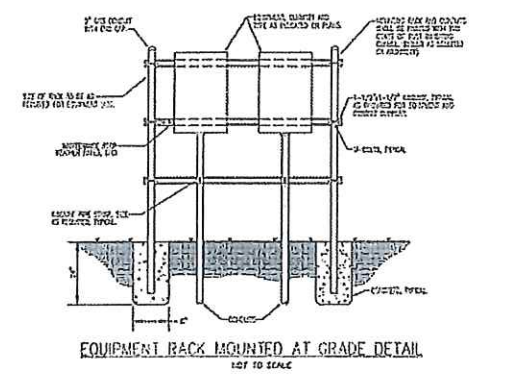
| MARK | DESCRIPTION | MIN. SUPPLY | DRAIN | MIN. TRAP |
|------|--|-------------|-------|-----------|
| L-1 | LAVATORY, WALL MOUNT, EQUAL TO AMERICAN STANDARD LUGGING CO. 2 1/2\" | 2" | 2" | 1 1/2" |
| WC-1 | WATER CLOSET, FLUSH TANK TYPE, ADA COMPLIANT, ELONGATED BOWL, COLOR PER AREA, EQUAL TO AMERICAN STANDARD 2220-2225, PROVIDE SEAT | 1" | 2" | 3" |
| MS-1 | MOP PANS, 18\" | 3/4" | 2" | 1 1/2" |
| DWH | WATER HEATER, 30 GALLON, ELECTRIC WITH EQUAL, 120V-50MVA, 200-250, 220 AMP, PROVIDE DRAIN PAN WITH 1/2\" | SEE FLAN | N/A | N/A |
| DWD | WATER CATER, 30 GALLON, ELECTRIC WITH EQUAL, 120V-50MVA, 200-250, 220 AMP, PROVIDE DRAIN PAN WITH 1/2\" | SEE FLAN | N/A | N/A |
| EPH | BACKFLOW PREVENTER, REDUCED PRESSURE ZONE, W/ ISOLATION VALVES, TEST PORTS, AND INLET STRAINER, EQUAL TO HATCO MODEL 484T-3 OR EQUAL | SEE FLAN | N/A | N/A |
| WS-1 | ICE MAKER OUTLET BOX, 1/2\" | N/A | N/A | N/A |
| WH-1 | WALL HYDRANT, FREEZELESS, KEVED TYPE, WITH ANTI-SIPHON VACUUM BREAKER, EQUAL TO HOODFORD MODEL 15 PROVIDE KEY-KEY | 2" | N/A | N/A |
| S-1 | SINK, 3 BOWL, EQUAL TO ADVANCE TASSO 85-3-34-025L, PROVIDE 1/2\" | 1 1/2" | 2" | 1 1/2" |
| S-2 | SINK, 1 BOWL, SINGLE STAINLESS STEEL, EQUAL TO ELKAY D-17, PROVIDE FAUCET EQUAL TO DELTA 1551P | 1 1/2" | 2" | 1 1/2" |

- GENERAL PLUMBING NOTES:**
1. THE CONTRACTOR SHALL EXECUTE ALL WORK SO THAT IT PROCEEDS WITH A MINIMUM OF INTERFERENCE WITH OTHER TRADES AND NORMAL FUNCTIONING OF EXISTING FACILITIES AND SERVICES.
 2. VERIFY EXACT ROUGH-IN AND FINAL EQUIPMENT REQUIREMENTS IN FIELD.
 3. THE CONTRACTOR SHALL BE RESPONSIBLE FOR ALL FINAL CONNECTIONS TO PLUMBING FIXTURES AND EQUIPMENT UNLESS OTHERWISE NOTED. IT IS NOT LIMITED TO PURSUING AND INSTALLING ALL TRAPS, DRAINS, AND SUPPLIES WITH STOPS.
 4. THE CONTRACTOR SHALL VERIFY THAT ALL PIPING, AS SHOWN ON THESE DRAWINGS WILL NOT CONFLICT WITH ANY DRAINS, SPOTTLES, JOISTS, VENTS, EQUIPMENT, ETC.
 5. COORDINATE ROUTING AND LOCATIONS OF WASTE AND VENT PIPING WITH ALL OTHER TRADES.
 6. THE PLUMBING CONTRACTOR SHALL COORDINATE WITH THE GENERAL CONTRACTOR AND OTHER TRADES ALL REQUIRED OPENINGS AND ENCLOSURES. ALL REQUIRED OPENINGS IN FOUNDATIONS, FLOORS, WALLS, AND ROOFS SHALL BE DESIGNED INTO THE STRUCTURE INITIALLY BY THE USE OF SCHEDULED, GRUBS, ETC. CUTTING AND PATCHING SHALL BE HELD TO A MINIMUM.
 7. ALL ITEMS PROJECTING THROUGH THE ROOF SHALL BE FLASHED A MINIMUM OF 12" ABOVE THE ROOF. ALL VENTS SHALL BE A MINIMUM OF 10" FROM ANY OUTSIDE AIR INTAKE. ALL VENTS SHALL BE OFFSET SO THAT ALL ROOF PENETRATIONS SHALL BE TO THE REAR OF THE BUILDING.
 8. ALL INDOOR GAS PIPING SHALL BE 3" MINIMUM.
 9. LOCATE ALL HORIZONTAL FEEDER LINES AWAY FROM LOAD BEARING STRUCTURAL MEMBERS.
 10. ISOLATE WATER SUPPLY AND WASTE PIPING UNDER HANDICAPPED LAVATORIES WITH "HAND-LAY GUARD" JACKETS.
 11. CONTRACTOR SHALL FURNISH 1/2" "ASHFLEXY" PIPE INSULATION FOR ALL METAL CONDENSATE DRAIN PIPING.
 12. PROVIDE STOPS AND SHOCK ABSORBERS AT EACH FIXTURE OR GROUP OF FIXTURES.
 13. PROVIDE VACUUM BREAKERS AT FIXTURES WITH HOSE THREAD CONNECTIONS AND APPLIANCES WITH DIRECT CONNECTIONS TO DOMESTIC WATER.
 14. PROVIDE SHEATHING UNITS AT ALL DRAIN-AR-METAL PIPE CONNECTIONS.
 15. ALL WATER LINES INSTALLED IN INTERIOR WALLS OR ABOVE CEILING SHOULD BE INSTALLED INSIDE OF WALL INSULATION AND INSULATED INDIVIDUALLY TO PROTECT FROM FREEZING.
 16. FLUSH HANDLES ON HANDICAP FIXTURES SHALL BE INSTALLED ON THE WIDE SIDE OF THE STALL. A PRESSURE TEST OF PLUMBING SYSTEM SHALL BE PERFORMED PRIOR TO THE INSTALLATION OF DRYWALL. THIS TEST IS TO BE PERFORMED UNDER THE SUPERVISION OF OWNER OR OWNER'S DESIGNEE.
 17. ALL VENTS TO BE TERMINATED IN ACCORDANCE WITH ALL APPLICABLE CODES.
 18. PENETRATIONS THRU RATED WALL AND FLOOR ASSEMBLIES SHALL BE PROTECTED BY UL RATED PRESTOPS COMPATIBLE AND EQUAL IN RATING TO THE WALL OR FLOOR ASSEMBLY BEING PENETRATED.
 19. ALL SEWER, VENT, AND WATER PIPING ROUTED IN CEILING SHALL BE COORDINATED WITH FLOOR FRAMING TO RUN PARALLEL TO JOISTS AND TO MINIMIZE PENETRATIONS THRU FRAMED MEMBERS.
 20. ALL WATER HEATER DRAIN PANS SHALL BE MIN. 6" DEEP. PROVIDE 1" DROUGHT WASTE PIPE TO NEAREST FLOOR DRAIN OR ROUTE TO OUTSIDE OF BUILDING. TERMINATE EXTERIOR DRAINS WITH 10" BELL TURNED DOWN 6" TO 24" ABOVE FINAL GRADE. PROVIDE TYP VALVE RATED AT 100 PSIG AND 150°F. PIPE TO PAN WITH COPPER PIPE SIZED TO VALVE.
 21. PLUMBING CONTRACTOR SHALL PROVIDE INDIRECT CONDENSATE DRAIN TO WITHIN 2 FT. OF COOLING COILS. CONNECT DRAIN TO ROSE SIDE OF TRAP OR FLOOR DRAIN OR SERVICE SINK WITH 2" MIN. AIR BREAK. FINAL CONNECTION TO COOLING COIL BY MECH CONTRACTOR.

| | | |
|--|--|---|
| Thomas E. Lovelace Electrical Engineering 8442 Suter Drive Columbus, MS 39223 Phone: (662) 921-3991 Email: thomas@thelovels.com | PLUMBING DETAILS <i>Clingan and associates</i> architect | FRESH MARKET CAFE Greenfield Road, Brandon MS |
| | 5339 I-55 NORTH, STE. 1101 JACKSON, MISS. 39211-4141 PHONE AND FAX: (601) 311-2224 E-MAIL: clingan@clinganandassociates.com ALL MATERIALS SHALL BE OF THE HIGHEST QUALITY AND MANUFACTURED IN THE U.S.A. | Date: 7/31/16 Drawn: JEL Check: ABE |



FIRE SUPPRESSION FOR GAS APPLIANCES
- KITCHEN HOOD WIRING DETAIL
NOT TO SCALE

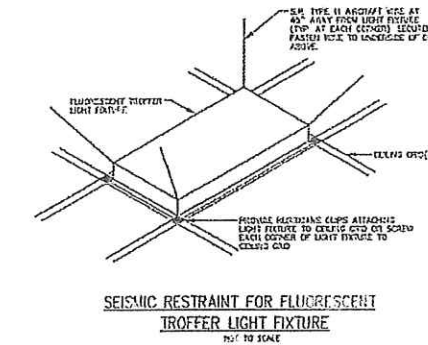
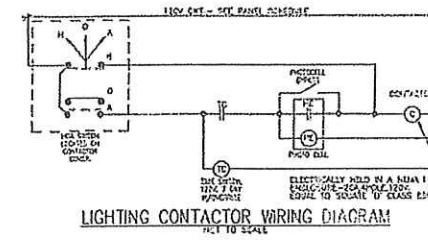
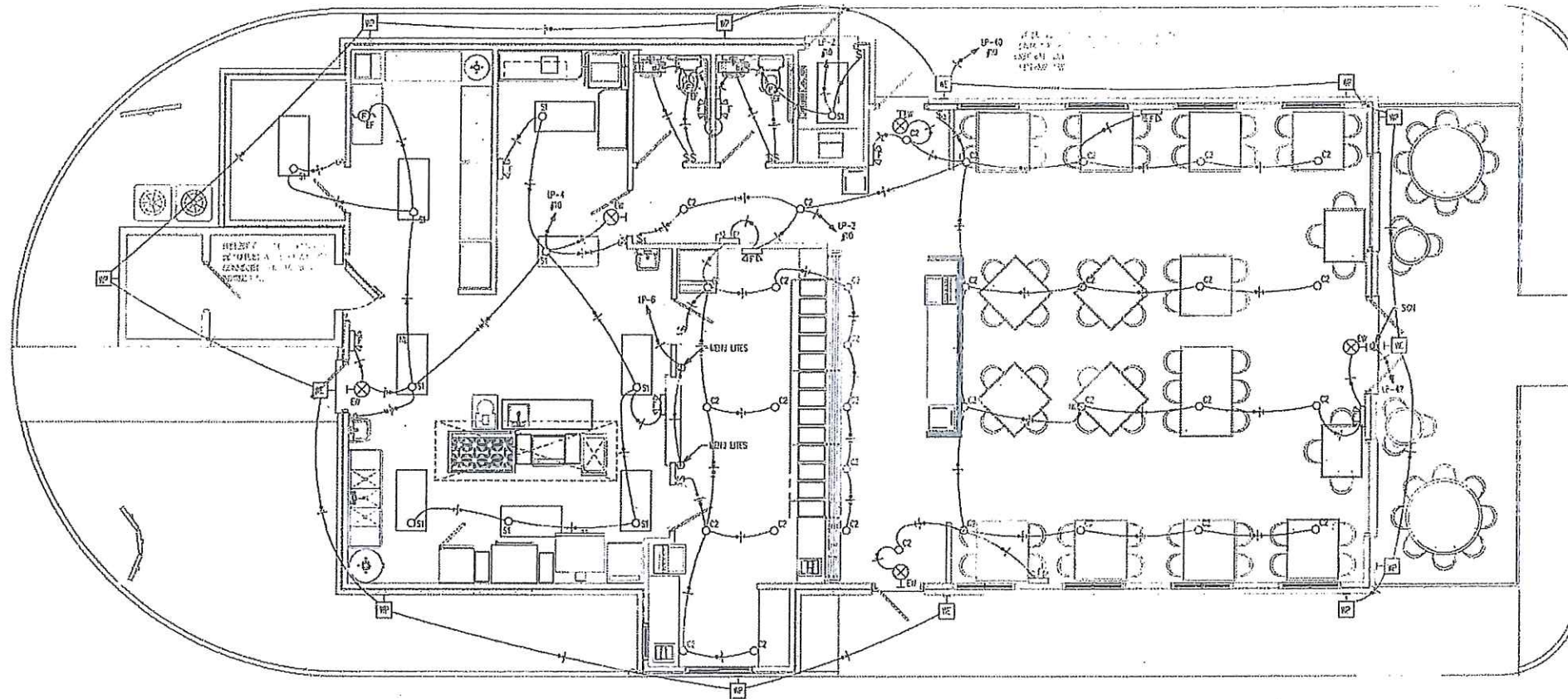


EQUIPMENT RACK MOUNTED AT GRADE DETAIL
NOT TO SCALE

| MP | | VOLTS 208/120V 3P 4W | | AC 22000 | |
|------------------|----------|----------------------|---|--------------|---|
| ELECTRICAL PANEL | | BUS AMPS 200 | | MAIN BUS BAR | |
| 1 | 120V/1 | 0 | 0 | 0 | 0 |
| 2 | 120V/2 | 0 | 0 | 0 | 0 |
| 3 | 120V/3 | 0 | 0 | 0 | 0 |
| 4 | 120V/4 | 0 | 0 | 0 | 0 |
| 5 | 120V/5 | 0 | 0 | 0 | 0 |
| 6 | 120V/6 | 0 | 0 | 0 | 0 |
| 7 | 120V/7 | 0 | 0 | 0 | 0 |
| 8 | 120V/8 | 0 | 0 | 0 | 0 |
| 9 | 120V/9 | 0 | 0 | 0 | 0 |
| 10 | 120V/10 | 0 | 0 | 0 | 0 |
| 11 | 120V/11 | 0 | 0 | 0 | 0 |
| 12 | 120V/12 | 0 | 0 | 0 | 0 |
| 13 | 120V/13 | 0 | 0 | 0 | 0 |
| 14 | 120V/14 | 0 | 0 | 0 | 0 |
| 15 | 120V/15 | 0 | 0 | 0 | 0 |
| 16 | 120V/16 | 0 | 0 | 0 | 0 |
| 17 | 120V/17 | 0 | 0 | 0 | 0 |
| 18 | 120V/18 | 0 | 0 | 0 | 0 |
| 19 | 120V/19 | 0 | 0 | 0 | 0 |
| 20 | 120V/20 | 0 | 0 | 0 | 0 |
| 21 | 120V/21 | 0 | 0 | 0 | 0 |
| 22 | 120V/22 | 0 | 0 | 0 | 0 |
| 23 | 120V/23 | 0 | 0 | 0 | 0 |
| 24 | 120V/24 | 0 | 0 | 0 | 0 |
| 25 | 120V/25 | 0 | 0 | 0 | 0 |
| 26 | 120V/26 | 0 | 0 | 0 | 0 |
| 27 | 120V/27 | 0 | 0 | 0 | 0 |
| 28 | 120V/28 | 0 | 0 | 0 | 0 |
| 29 | 120V/29 | 0 | 0 | 0 | 0 |
| 30 | 120V/30 | 0 | 0 | 0 | 0 |
| 31 | 120V/31 | 0 | 0 | 0 | 0 |
| 32 | 120V/32 | 0 | 0 | 0 | 0 |
| 33 | 120V/33 | 0 | 0 | 0 | 0 |
| 34 | 120V/34 | 0 | 0 | 0 | 0 |
| 35 | 120V/35 | 0 | 0 | 0 | 0 |
| 36 | 120V/36 | 0 | 0 | 0 | 0 |
| 37 | 120V/37 | 0 | 0 | 0 | 0 |
| 38 | 120V/38 | 0 | 0 | 0 | 0 |
| 39 | 120V/39 | 0 | 0 | 0 | 0 |
| 40 | 120V/40 | 0 | 0 | 0 | 0 |
| 41 | 120V/41 | 0 | 0 | 0 | 0 |
| 42 | 120V/42 | 0 | 0 | 0 | 0 |
| 43 | 120V/43 | 0 | 0 | 0 | 0 |
| 44 | 120V/44 | 0 | 0 | 0 | 0 |
| 45 | 120V/45 | 0 | 0 | 0 | 0 |
| 46 | 120V/46 | 0 | 0 | 0 | 0 |
| 47 | 120V/47 | 0 | 0 | 0 | 0 |
| 48 | 120V/48 | 0 | 0 | 0 | 0 |
| 49 | 120V/49 | 0 | 0 | 0 | 0 |
| 50 | 120V/50 | 0 | 0 | 0 | 0 |
| 51 | 120V/51 | 0 | 0 | 0 | 0 |
| 52 | 120V/52 | 0 | 0 | 0 | 0 |
| 53 | 120V/53 | 0 | 0 | 0 | 0 |
| 54 | 120V/54 | 0 | 0 | 0 | 0 |
| 55 | 120V/55 | 0 | 0 | 0 | 0 |
| 56 | 120V/56 | 0 | 0 | 0 | 0 |
| 57 | 120V/57 | 0 | 0 | 0 | 0 |
| 58 | 120V/58 | 0 | 0 | 0 | 0 |
| 59 | 120V/59 | 0 | 0 | 0 | 0 |
| 60 | 120V/60 | 0 | 0 | 0 | 0 |
| 61 | 120V/61 | 0 | 0 | 0 | 0 |
| 62 | 120V/62 | 0 | 0 | 0 | 0 |
| 63 | 120V/63 | 0 | 0 | 0 | 0 |
| 64 | 120V/64 | 0 | 0 | 0 | 0 |
| 65 | 120V/65 | 0 | 0 | 0 | 0 |
| 66 | 120V/66 | 0 | 0 | 0 | 0 |
| 67 | 120V/67 | 0 | 0 | 0 | 0 |
| 68 | 120V/68 | 0 | 0 | 0 | 0 |
| 69 | 120V/69 | 0 | 0 | 0 | 0 |
| 70 | 120V/70 | 0 | 0 | 0 | 0 |
| 71 | 120V/71 | 0 | 0 | 0 | 0 |
| 72 | 120V/72 | 0 | 0 | 0 | 0 |
| 73 | 120V/73 | 0 | 0 | 0 | 0 |
| 74 | 120V/74 | 0 | 0 | 0 | 0 |
| 75 | 120V/75 | 0 | 0 | 0 | 0 |
| 76 | 120V/76 | 0 | 0 | 0 | 0 |
| 77 | 120V/77 | 0 | 0 | 0 | 0 |
| 78 | 120V/78 | 0 | 0 | 0 | 0 |
| 79 | 120V/79 | 0 | 0 | 0 | 0 |
| 80 | 120V/80 | 0 | 0 | 0 | 0 |
| 81 | 120V/81 | 0 | 0 | 0 | 0 |
| 82 | 120V/82 | 0 | 0 | 0 | 0 |
| 83 | 120V/83 | 0 | 0 | 0 | 0 |
| 84 | 120V/84 | 0 | 0 | 0 | 0 |
| 85 | 120V/85 | 0 | 0 | 0 | 0 |
| 86 | 120V/86 | 0 | 0 | 0 | 0 |
| 87 | 120V/87 | 0 | 0 | 0 | 0 |
| 88 | 120V/88 | 0 | 0 | 0 | 0 |
| 89 | 120V/89 | 0 | 0 | 0 | 0 |
| 90 | 120V/90 | 0 | 0 | 0 | 0 |
| 91 | 120V/91 | 0 | 0 | 0 | 0 |
| 92 | 120V/92 | 0 | 0 | 0 | 0 |
| 93 | 120V/93 | 0 | 0 | 0 | 0 |
| 94 | 120V/94 | 0 | 0 | 0 | 0 |
| 95 | 120V/95 | 0 | 0 | 0 | 0 |
| 96 | 120V/96 | 0 | 0 | 0 | 0 |
| 97 | 120V/97 | 0 | 0 | 0 | 0 |
| 98 | 120V/98 | 0 | 0 | 0 | 0 |
| 99 | 120V/99 | 0 | 0 | 0 | 0 |
| 100 | 120V/100 | 0 | 0 | 0 | 0 |

| PP | | VOLTS 208/120V 3P 4W | | AC 22000 | |
|------------------|----------|----------------------|---|--------------|---|
| ELECTRICAL PANEL | | BUS AMPS 200 | | MAIN BUS BAR | |
| 1 | 120V/1 | 0 | 0 | 0 | 0 |
| 2 | 120V/2 | 0 | 0 | 0 | 0 |
| 3 | 120V/3 | 0 | 0 | 0 | 0 |
| 4 | 120V/4 | 0 | 0 | 0 | 0 |
| 5 | 120V/5 | 0 | 0 | 0 | 0 |
| 6 | 120V/6 | 0 | 0 | 0 | 0 |
| 7 | 120V/7 | 0 | 0 | 0 | 0 |
| 8 | 120V/8 | 0 | 0 | 0 | 0 |
| 9 | 120V/9 | 0 | 0 | 0 | 0 |
| 10 | 120V/10 | 0 | 0 | 0 | 0 |
| 11 | 120V/11 | 0 | 0 | 0 | 0 |
| 12 | 120V/12 | 0 | 0 | 0 | 0 |
| 13 | 120V/13 | 0 | 0 | 0 | 0 |
| 14 | 120V/14 | 0 | 0 | 0 | 0 |
| 15 | 120V/15 | 0 | 0 | 0 | 0 |
| 16 | 120V/16 | 0 | 0 | 0 | 0 |
| 17 | 120V/17 | 0 | 0 | 0 | 0 |
| 18 | 120V/18 | 0 | 0 | 0 | 0 |
| 19 | 120V/19 | 0 | 0 | 0 | 0 |
| 20 | 120V/20 | 0 | 0 | 0 | 0 |
| 21 | 120V/21 | 0 | 0 | 0 | 0 |
| 22 | 120V/22 | 0 | 0 | 0 | 0 |
| 23 | 120V/23 | 0 | 0 | 0 | 0 |
| 24 | 120V/24 | 0 | 0 | 0 | 0 |
| 25 | 120V/25 | 0 | 0 | 0 | 0 |
| 26 | 120V/26 | 0 | 0 | 0 | 0 |
| 27 | 120V/27 | 0 | 0 | 0 | 0 |
| 28 | 120V/28 | 0 | 0 | 0 | 0 |
| 29 | 120V/29 | 0 | 0 | 0 | 0 |
| 30 | 120V/30 | 0 | 0 | 0 | 0 |
| 31 | 120V/31 | 0 | 0 | 0 | 0 |
| 32 | 120V/32 | 0 | 0 | 0 | 0 |
| 33 | 120V/33 | 0 | 0 | 0 | 0 |
| 34 | 120V/34 | 0 | 0 | 0 | 0 |
| 35 | 120V/35 | 0 | 0 | 0 | 0 |
| 36 | 120V/36 | 0 | 0 | 0 | 0 |
| 37 | 120V/37 | 0 | 0 | 0 | 0 |
| 38 | 120V/38 | 0 | 0 | 0 | 0 |
| 39 | 120V/39 | 0 | 0 | 0 | 0 |
| 40 | 120V/40 | 0 | 0 | 0 | 0 |
| 41 | 120V/41 | 0 | 0 | 0 | 0 |
| 42 | 120V/42 | 0 | 0 | 0 | 0 |
| 43 | 120V/43 | 0 | 0 | 0 | 0 |
| 44 | 120V/44 | 0 | 0 | 0 | 0 |
| 45 | 120V/45 | 0 | 0 | 0 | 0 |
| 46 | 120V/46 | 0 | 0 | 0 | 0 |
| 47 | 120V/47 | 0 | 0 | 0 | 0 |
| 48 | 120V/48 | 0 | 0 | 0 | 0 |
| 49 | 120V/49 | 0 | 0 | 0 | 0 |
| 50 | 120V/50 | 0 | 0 | 0 | 0 |
| 51 | 120V/51 | 0 | 0 | 0 | 0 |
| 52 | 120V/52 | 0 | 0 | 0 | 0 |
| 53 | 120V/53 | 0 | 0 | 0 | 0 |
| 54 | 120V/54 | 0 | 0 | 0 | 0 |
| 55 | 120V/55 | 0 | 0 | 0 | 0 |
| 56 | 120V/56 | 0 | 0 | 0 | 0 |
| 57 | 120V/57 | 0 | 0 | 0 | 0 |
| 58 | 120V/58 | 0 | 0 | 0 | 0 |
| 59 | 120V/59 | 0 | 0 | 0 | 0 |
| 60 | 120V/60 | 0 | 0 | 0 | 0 |
| 61 | 120V/61 | 0 | 0 | 0 | 0 |
| 62 | 120V/62 | 0 | 0 | 0 | 0 |
| 63 | 120V/63 | 0 | 0 | 0 | 0 |
| 64 | 120V/64 | 0 | 0 | 0 | 0 |
| 65 | 120V/65 | 0 | 0 | 0 | 0 |
| 66 | 120V/66 | 0 | 0 | 0 | 0 |
| 67 | 120V/67 | 0 | 0 | 0 | 0 |
| 68 | 120V/68 | 0 | 0 | 0 | 0 |
| 69 | 120V/69 | 0 | 0 | 0 | 0 |
| 70 | 120V/70 | 0 | 0 | 0 | 0 |
| 71 | 120V/71 | 0 | 0 | 0 | 0 |
| 72 | 120V/72 | 0 | 0 | 0 | 0 |
| 73 | 120V/73 | 0 | 0 | 0 | 0 |
| 74 | 120V/74 | 0 | 0 | 0 | 0 |
| 75 | 120V/75 | 0 | 0 | 0 | 0 |
| 76 | 120V/76 | 0 | 0 | 0 | 0 |
| 77 | 120V/77 | 0 | 0 | 0 | 0 |
| 78 | 120V/78 | 0 | 0 | 0 | 0 |
| 79 | 120V/79 | 0 | 0 | 0 | 0 |
| 80 | 120V/80 | 0 | 0 | 0 | 0 |
| 81 | 120V/81 | 0 | 0 | 0 | 0 |
| 82 | 120V/82 | 0 | 0 | 0 | 0 |
| 83 | 120V/83 | 0 | 0 | 0 | 0 |
| 84 | 120V/84 | 0 | 0 | 0 | 0 |
| 85 | 120V/85 | 0 | 0 | 0 | 0 |
| 86 | 120V/86 | 0 | 0 | 0 | 0 |
| 87 | 120V/87 | 0 | 0 | 0 | 0 |
| 88 | 120V/88 | 0 | 0 | 0 | 0 |
| 89 | 120V/89 | 0 | 0 | 0 | 0 |
| 90 | 120V/90 | 0 | 0 | 0 | 0 |
| 91 | 120V/91 | 0 | 0 | 0 | 0 |
| 92 | 120V/92 | 0 | 0 | 0 | 0 |
| 93 | 120V/93 | 0 | 0 | 0 | 0 |
| 94 | 120V/94 | 0 | 0 | 0 | 0 |
| 95 | 120V/95 | 0 | 0 | 0 | 0 |
| 96 | 120V/96 | 0 | 0 | 0 | 0 |
| 97 | 120V/97 | 0 | 0 | 0 | 0 |
| 98 | 120V/98 | 0 | 0 | 0 | 0 |
| 99 | 120V/99 | 0 | 0 | 0 | 0 |
| 100 | 120V/100 | 0 | 0 | 0 | 0 |

| LP | | VOLTS 208/120V 3P 4W | | AC 22000 | |
|------------------|--------|----------------------|---|--------------|---|
| ELECTRICAL PANEL | | BUS AMPS 200 | | MAIN BUS BAR | |
| 1 | 120V/1 | 0 | 0 | 0 | 0 |
| 2 | 120V/2 | 0 | 0 | 0 | 0 |
| 3 | 120V/3 | 0 | 0 | 0 | 0 |
| 4 | 120V/4 | 0 | 0 | 0 | 0 |
| 5 | 120V/5 | 0 | 0 | 0 | 0 |
| 6 | 120V/6 | 0 | 0 | 0 | 0 |
| 7 | 120V/7 | 0 | 0 | 0 | 0 |
| 8 | 120V/8 | 0 | 0 | 0 | 0 |
| 9 | 120V | | | | |

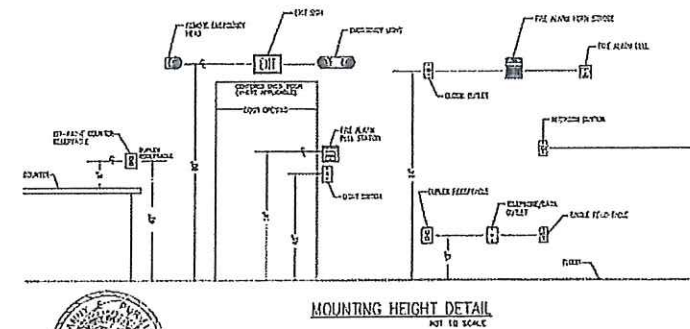


| SWITCH SCHEDULE | | | | | |
|------------------|--------|-------------------------|-------------|------------------------------|----------|
| CALLOUT | SYMBOL | NOTE 1 | NOTE 2 | NOTE 3 | QUANTITY |
| Control Switch | S | SWITCH POLE FROM 150VAC | 250-100/10V | MINIMUM CIRCUIT IN (CIRCUIT) | 1 |
| Emergency Switch | ES | EMERGENCY SWITCH 150VAC | 250-100/10V | MINIMUM CIRCUIT IN (CIRCUIT) | 1 |

| LUMINAIRE SCHEDULE | | | | | | | | | | |
|--------------------|----------|------------------|---------------------------------------|---------|----------|-------------------|---------------|-----------|---------------------------------------|----------|
| CALLOUT | SYMBOL | LAMP | DESCRIPTION | BALLAST | MOUNTING | MODEL | INPUT WATTAGE | VOLTS | NOTE 1 | QUANTITY |
| SW | [Symbol] | (1) 225W LED | 1/2" SQUARE LED 2700K DIMMABLE 150VAC | DRIVER | WALL | 225W LED 2700K AL | 22.5 | 120V 0-20 | 1/2" SQUARE LED 2700K DIMMABLE 150VAC | 2 |
| CF | [Symbol] | (1) 125W LED | 1/2" SQUARE LED 2700K DIMMABLE 150VAC | DRIVER | RECESSED | 125W LED 2700K AL | 12.5 | 120V 0-20 | 1/2" SQUARE LED 2700K DIMMABLE 150VAC | 15 |
| RF | [Symbol] | (1) 125W LED | 1/2" SQUARE LED 2700K DIMMABLE 150VAC | DRIVER | RECESSED | 125W LED 2700K AL | 12.5 | 120V 0-20 | 1/2" SQUARE LED 2700K DIMMABLE 150VAC | 1 |
| RF | [Symbol] | (1) 250W LED | 1/2" SQUARE LED 2700K DIMMABLE 150VAC | DRIVER | RECESSED | 250W LED 2700K AL | 25 | 120V 0-20 | 1/2" SQUARE LED 2700K DIMMABLE 150VAC | 3 |
| F | [Symbol] | (1) 54W LED | 1/2" SQUARE LED 2700K DIMMABLE 150VAC | DRIVER | WALL | 54W LED 2700K AL | 5.4 | 120V 0-20 | 1/2" SQUARE LED 2700K DIMMABLE 150VAC | 11 |
| SH | [Symbol] | (1) 210 200W LED | 1/2" SQUARE LED 2700K DIMMABLE 150VAC | DRIVER | RECESSED | 210W LED 2700K AL | 21 | 120V 0-20 | 1/2" SQUARE LED 2700K DIMMABLE 150VAC | 11 |
| RE | [Symbol] | (1) 210 200W LED | 1/2" SQUARE LED 2700K DIMMABLE 150VAC | DRIVER | RECESSED | 210W LED 2700K AL | 21 | 120V 0-20 | 1/2" SQUARE LED 2700K DIMMABLE 150VAC | 1 |
| RF | [Symbol] | (1) 210 200W LED | 1/2" SQUARE LED 2700K DIMMABLE 150VAC | DRIVER | RECESSED | 210W LED 2700K AL | 21 | 120V 0-20 | 1/2" SQUARE LED 2700K DIMMABLE 150VAC | 1 |

| VOLTAGE DROP SCHEDULE | | | | | |
|-----------------------|--------|----------------|--------------------|-----------|-----------|
| DEVICE | FEEDER | BRANCH CIRCUIT | TOTAL VOLTAGE DROP | WIRE SIZE | WIRE SIZE |
| SW | 1402 | 1402 | 2.10V | 14 AWG | 14 AWG |
| RF | 1402 | 1402 | 1.21V | 14 AWG | 14 AWG |
| RF | 1402 | 1402 | 1.31V | 14 AWG | 14 AWG |

1. VERIFY ALL FROM OTHERS WITH THE ARCHITECT.
2. VERIFY ALL SYMBOLS AGAINST THE MANUFACTURER'S LITERATURE.



systems engineering
automation power electrical

LIGHTING PLAN
clingan and associates
5330 I-55 NORTH, STE. 1108
JACKSON, MISS. 39206-4141 architect
PHONE AND FAX 601-713-0993
E-MAIL: clinganassociates@ivd.com
ALL MATERIAL SUBJECT TO 2018 CLINGMAN AND ASSOCIATES ARCHITECT

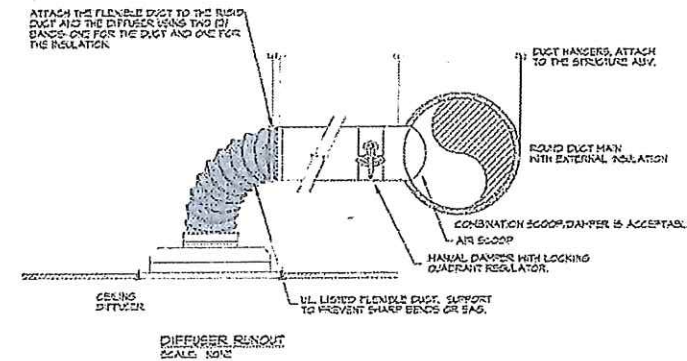
FRESH MARKET CAFE
Greenfield Road
Brandon, MS
Date 7.12.16
Draw LEP
Check ASK
Rev.

E3
13 of 26

| DX SPLIT SYSTEM SCHEDULE | | | | INDOOR UNIT | | | | | | | | | | OUTDOOR UNIT | | | | REMARKS | | | | | | | | | | |
|--------------------------|---------------------------|--------------|----------------------------|--------------------------|------|-------------|-----------------------|------------|----------------|-------------|-------------|--------|----------------------------|--------------|-----------|----------|-------------|---------|----------|--------|------|-------------|-----------|--------------|--------|------|-------------|------------------|
| MARK | NO. OF COOLING CAP (TONS) | DESIGN BASIS | CONDENSING PRESSURE (PSIG) | TOTAL COOLING CAP (TONS) | SEER | REFRIGERANT | FURNACE/HRV MODEL NO. | COIL (BTU) | COIL MODEL NO. | HEIGHT (FT) | ORIENTATION | SA CFM | SWP (IN. H ₂ O) | OA CFM | TYPE | NET BTUH | OUTPUT BTUH | A/F/E | VOLTAGE | HEA | HPFP | WEIGHT (LB) | MODEL NO. | VOLTAGE | HEA | HPFP | WEIGHT (LB) | |
| IN-5004 | 5 | CARECO | 37.50 | 42.50 | 13 | R-410A | 555TALD | 113 | 02PFLC | 62 | UPFLOW | 2000 | 0.5 | 500 | NAT. GAS | 10200 | 101600 | 9.8 | 208V/1PH | 2 1/2" | 20 | 115 | 24AG350 | 208-230V/1PH | 2 1/2" | 20 | 115 | NOTES 1, 2, 3, 4 |
| IN-5003 | 5 | CARECO | 37.50 | 42.50 | 13 | R-410A | 555TALD | 113 | 02PFLC | 62 | UPFLOW | 2000 | 0.5 | 500 | NAT. GAS | 10200 | 101600 | 9.8 | 208V/1PH | 2 1/2" | 20 | 115 | 24AG350 | 208-230V/1PH | 2 1/2" | 20 | 115 | NOTES 1, 2, 3, 4 |
| IN-5004 | 0.5 | DAKIN | 10200 | - | 13 | R-410A | FINSH | 113 | - | - | UPFLOW | 2000 | 0.5 | 500 | HEAT PUMP | - | 10000 | - | 208V/1PH | 2 1/2" | 20 | 115 | 24AG350 | 208-230V/1PH | 2 1/2" | 20 | 115 | NOTES 1, 4, 9 |

- NOTE:**
- ALL RATINGS @ AIR STANDARD 95°F AMBIENT AIR AND 60°F DB, 67°F WB MIXED AIR.
 - PROGRAMMABLE ELECTRONIC THERMOSTATS.
 - CONCENTRIC VENT KIT.
 - THERMAL EXPANSION VALVE REFRIGERANT FLOW CONTROL.
 - HAND HELD REMOTE CONTROL.

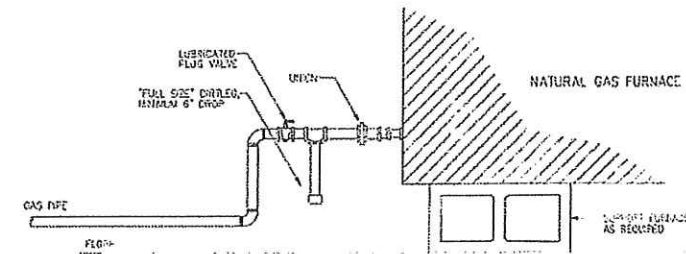
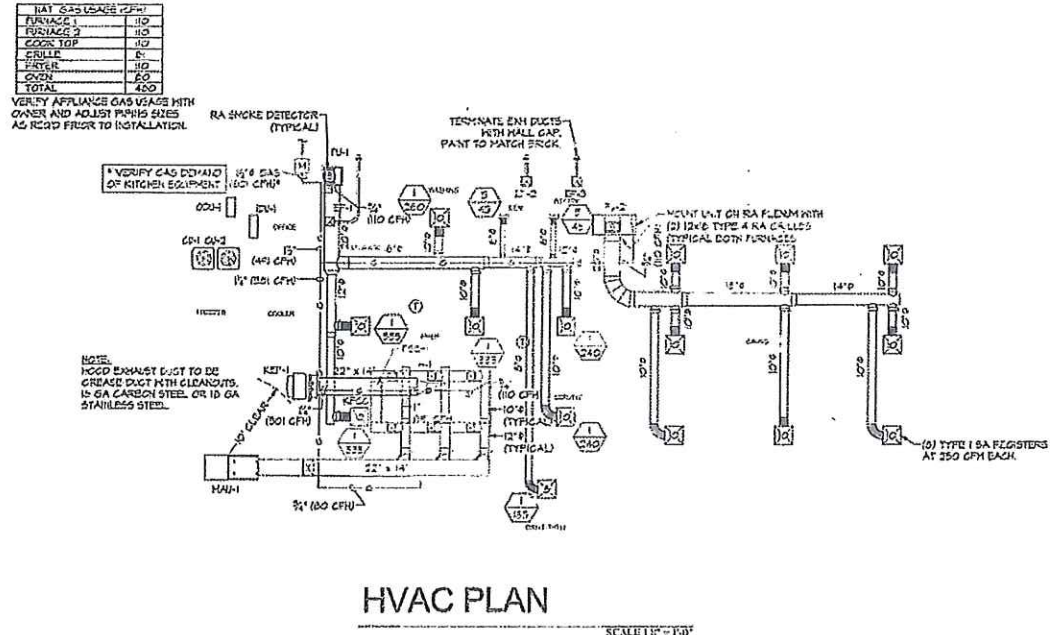
| TAS NO. | FLOW (CFM) | STATUS | VOLTAGE | FLA | DESIGN BASIS | DUCT TO OUTDOORS |
|---------|------------|-------------|---------|---------|--------------|------------------|
| EX-1 | 50 | 1/2" x 1/2" | 115V/60 | 0.4 AMP | EXHAUST FAN | 3" |



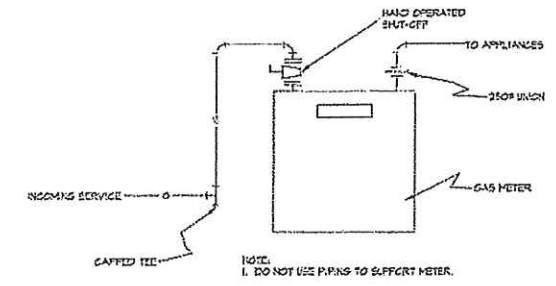
DIFFUSER, REGISTER & GRILLE SCHEDULE

| TYPE | SERVICE | CFM RANGE | SIZE | LOG | RUNOUT |
|----------|---|-------------|-----------|-----|-----------|
| TIUS THL | 1 SUPPLY AIR SQUARE CEILING DIFFUSER (LAY IN CEILING) | 0 - 100 | 24" x 24" | 0" | 0" |
| | | 105 - 200 | 24" x 24" | 0" | 0" |
| | | 205 - 300 | 24" x 24" | 10" | 10" |
| | | 305 - 600 | 24" x 24" | 12" | 12" |
| | | 605 - 1200 | 24" x 24" | 14" | 14" |
| TIUS THL | 2 RETURN AIR/ EXHAUST AIR CEILING GRILLE (LAY IN CEILING) | 0 - 100 | 24" x 24" | 0" | 0" |
| | | 105 - 200 | 24" x 24" | 0" | 0" |
| | | 205 - 300 | 24" x 24" | 10" | 10" |
| | | 305 - 600 | 24" x 24" | 12" | 12" |
| | | 605 - 1200 | 24" x 24" | 14" | 14" |
| TIUS SOF | 3 SUPPLY AIR WALL REGISTER | 0 - 100 | 6" x 6" | - | 0" x 6" |
| | | 105 - 200 | 6" x 6" | - | 0" x 6" |
| | | 205 - 300 | 12" x 6" | - | 12" x 6" |
| | | 305 - 450 | 12" x 6" | - | 12" x 6" |
| | | 450 - 600 | 12" x 10" | - | 12" x 10" |
| TIUS SOF | 4 RETURN EXHAUST WALL GRILLE | 0 - 250 | 6" x 6" | - | 0" x 6" |
| | | 255 - 600 | 6" x 10" | - | 0" x 10" |
| | | 605 - 1200 | 12" x 10" | - | 12" x 10" |
| | | 1205 - 1600 | 18" x 10" | - | 18" x 10" |
| | | 1605 - 2000 | 20" x 10" | - | 20" x 10" |
| TIUS SOF | 5 ROUND SUPPLY DIFFUSER (SPICAL DUCT MOUNT) | 0 - 100 | 3" x 3" | - | 0" x 3" |
| | | 105 - 250 | 3" x 3" | - | 0" x 3" |
| | | 255 - 350 | 4" x 4" | - | 0" x 4" |
| | | 355 - 600 | 4" x 4" | - | 0" x 4" |
| | | 605 - 1200 | 4" x 4" | - | 0" x 4" |
| TIUS SOF | 6 RECTANGULAR SUPPLY DIFFUSER (SPICAL DUCT MOUNT) | 0 - 150 | 6" x 6" | - | 0" x 6" |
| | | 155 - 250 | 6" x 6" | - | 0" x 6" |
| | | 255 - 350 | 12" x 6" | - | 12" x 6" |
| | | 355 - 450 | 12" x 6" | - | 12" x 6" |
| | | 450 - 600 | 12" x 12" | - | 12" x 12" |

- NOTES:**
- REFER TO MECHANICAL FLOOR PLANS FOR LOCATIONS AND QUANTITIES.
 - EXACT LOCATION OF ALL CEILING MOUNTED DIFFUSERS, REGISTERS, & GRILLES SHALL BE AS SHOWN ON THE ARCHITECTURAL CEILING PLANS.
 - RUNOUT SIZES ARE AS NOTED IN SCHEDULE UNLESS OTHERWISE NOTED ON PLANS OR DETAILS.
 - NOT ALL SIZES SHOWN MAY BE USED ON THIS PROJECT.
 - DIFFUSER TYPE '3' THROUGH PATTERNS INDICATED ON PLANS.
- TYPICAL SUPPLY DIFFUSER TYPE, SEE ABOVE
DESIGN CFM
- TYPICAL RETURN DIFFUSER TYPE, SEE ABOVE
DESIGN CFM IS NOT SPECIFIED



Natural Gas Connection Detail
SCALE: NONE



TYPICAL GAS METER PIPING DETAIL
SCALE: NONE

- GENERAL NOTES:**
- INSTALL EXHAUST FAN PER HFG INSTRUCTIONS. DUCT TO OUTDOORS. TERMINATE W/ WEATHER PROOF CAP. PROVIDE BACKFLOW DAMPERS AT EACH FAN. ELECTRICAL INSTALLER TO WIRE EACH FAN TO LIGHT SWITCH PER ELECTRICAL DRAWINGS.
 - MOUNT ELECTRONIC THERMOSTATS 48" AFF. WIRE TO INITS PER HFG INSTRUCTIONS.
 - DUCT DIMENSIONS SHOWN ARE INSIDE CLEAR DIMENSIONS.
 - CONTRACTOR TO PROVIDE NEW DISPOSABLE FILTERS AT COMPLETION OF CONSTRUCTION.
 - PRIOR TO INSTALLATION CONTRACTOR SHALL VERIFY LOCATION OF ANY OBSTRUCTIONS AND ADJUST DUCT LAYOUT AS REQUIRED.
 - PROVIDE BALANCE DAMPERS AT ALL BRANCH TAKE-OFFS (REIN FORS (REIN) OR MORS (MORS)).
 - ALL RYS SHALL BE EQUIPPED WITH LOCAL DISCONNECTS.
 - SEE CONVENTION OUTLINES SHALL BE INSTALLED AT RYS WHERE REQUIRED. REFER TO ELECTRICAL DRAWINGS.



| | | |
|--|--|--|
| Thomas E. Lovelace Mechanical Engineering 2443 Satal Drive Pascagoula, MS 39059 Phone: (601) 603-2991 Email: thomas@tlovelace.com | HVAC PLAN <i>clingan and associates</i> architect 5319 155 NORTH ST. 110B JACKSON, MISS. 39206-4141 PHONE AND FAX 601-713-4993 E-MAIL: cinganassociates@live.com ALL RIGHTS RESERVED © 2018 CLINGAN AND ASSOCIATES ARCHITECT | FRESH MARKET CAFE Greenfield Road, Brandon MS Date: 7/12/18 Drawn: TEL Checked: ABC Sheet: M-1 |
|--|--|--|

| EQUIPMENT SCHEDULE | | | | | | | | | | | |
|--|--------------|--------------|----------------------|-------------|-------------------|------|-----|------|---------|-----|------------|
| Beh Drive Control at Sidecut Exhaust Fan | | | | | | | | | | | MARK REF-1 |
| Qty | Control Mark | Volume (CFM) | Operating Power (HP) | Weight (Lb) | Motor Information | | | | | | |
| 1 | CMH 164-7 | 2.700 | 0.72 | 65 | Size (in) | VDP | End | Wdg | Wdg Spd | FLA | |
| 1 | CMH 164-7 | 2.700 | 0.72 | 65 | 3/4 | 1200 | OP | 1725 | 1 | 3.5 | |

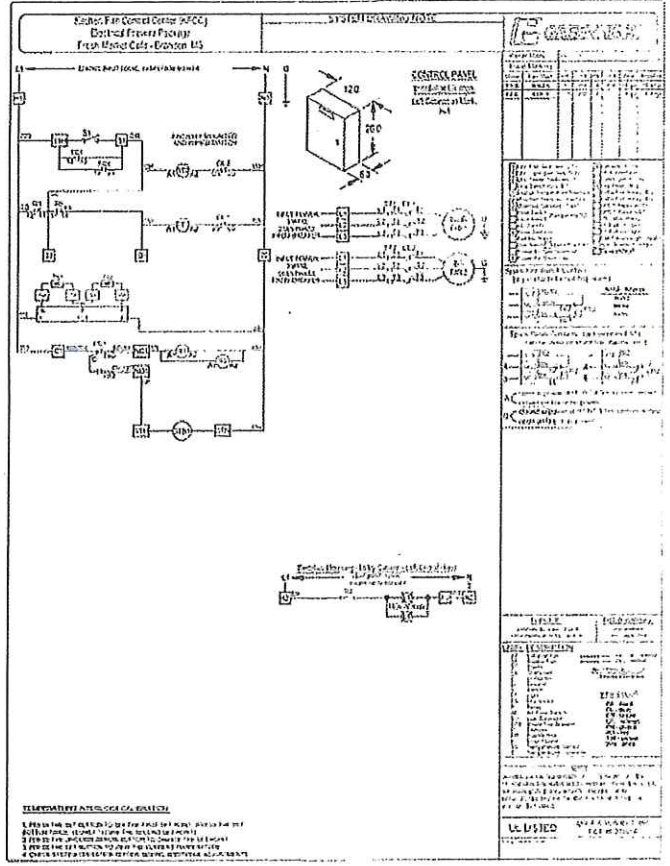
OPTIONS AND ACCESSORIES

ULAL 702 Listed - Power Ventilation for Rest. Equip. Applications
 Data, NEMA 4, Taps, Chopped with Unit
 Exhaust Cabinet
 Heat Batts (Attached)

| EQUIPMENT SCHEDULE | | | | | | | | | | | |
|-------------------------------|----------------|--------------|---------------|---------------|------|-----------------|--------|--|--|--|------------|
| Non-Tempared Make-Up Air Unit | | | | | | | | | | | Mark MAU-1 |
| Qty | Control Mark | Volume (CFM) | Rated SP | T/4 SP | FIRM | Operating Power | Weight | | | | |
| 1 | HSFD-110-HS-G1 | 2,100 CFM | 0.57 in. w.g. | 0.81 in. w.g. | 800 | 0.51 hp | 235 lb | | | | |
| 1 | HSFD-110-HS-G1 | 2,100 CFM | 0.57 in. w.g. | 0.81 in. w.g. | 800 | 0.51 hp | 235 lb | | | | |

OPTIONS AND ACCESSORIES

Air Flow Arrangement: Outdoor Air Only
 Wash Hood: Minimum Mark, 1607H1 - (H)
 Dampers: N/A
 Outdoor Air Intake Position: End
 Discharge Position: End
 Coating: Standard
 Insulation: None
 Access: Open Right Hand
 Blowing: 0°/90°/180°/270°
 Outside: 1 in. Insul.
 Unit Warranty: 1 Yr (Standard)



| HOOD INFORMATION | | | | | | | | | | | |
|------------------|------|-----------|-------------|------------|------------|-------------|-----------|-----------------|----------------|---------------------|-------------------------|
| HOOD NO. | MARK | MODEL | HOOD HEIGHT | HOOD WIDTH | HOOD DEPTH | HOOD WEIGHT | HOOD TYPE | HOOD MATERIAL | EMERGENCY STOP | EMERGENCY STOP TYPE | EMERGENCY STOP LOCATION |
| 1 | H-1 | GHW-141-G | 14 | 64 | 24 | 110 | WASH HOOD | STAINLESS STEEL | NO | NO | NO |

| HOOD INFORMATION | | | | | | | | | | | |
|------------------|------|--------------|--------------|------|--------------|-----------|-----------------|-------------|----------|--------|---------|
| HOOD NO. | MARK | FEATURE TYPE | FEATURE TYPE | LOGS | TYPE / MODEL | SCHEMATIC | LOCATION | FIRE SYSTEM | CONTROLS | WEIGHT | SECTION |
| 1 | H-1 | INCANDESCENT | INCANDESCENT | 4 | 43 FT | BAFFLE | STAINLESS STEEL | 2 | 15 | 2100 | SINGLE |

| HOOD INFORMATION | | | | | | | | | | | |
|------------------|------|-------|-----------|--------------------|------------|-----------|-------------|-----|------|-----|------|
| HOOD NO. | MARK | TYPE | SIZE (in) | RELATED DIMENSIONS | LED LIGHTS | TOTAL CFM | TYPE / HOOD | QTY | W | DIA | VEL |
| 1 | H-1 | FRONT | 156 | 14 | 10 | NO | RD | NO | 1600 | 16 | 0.03 |
| | | BACK | 156 | 14 | 10 | NO | RD | NO | 1600 | 16 | 0.03 |

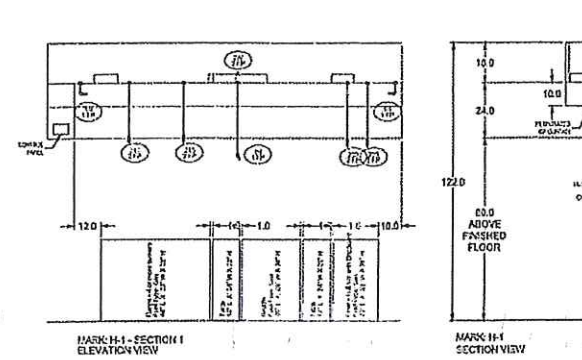
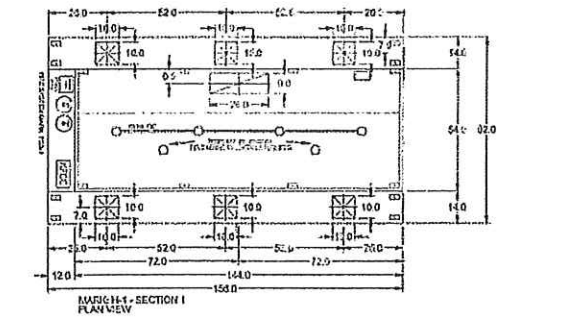
HOOD DETAILS

UL LISTED W/OUT EXHAUST FIRE DAMPER - UL 601H1723
 FINISHED BACK - FULL LENGTH
 18 INCH CEILING ENCLOSURE - FRONT BACK LEFT RIGHT - FIELD INSTALLED
 FACTORY FINISHED EXHAUST COLLARS
 FLEXIBLE EXHAUST DUCT UP - PULP TECHNOLOGY
 STAINLESS STEEL CONSTRUCTION FOR STRENGTH

| FIRE SYSTEM INFORMATION | | | | | | | | | | | |
|-------------------------|------------|----------|-----------|-----|------------|--------------|---------------|---------------|---------------|---------------|---------------|
| MARK | MODEL | LOCATION | FLOOR | PCU | DETECTION | DEFLECTION | EXTINGUISHING | EXTINGUISHING | EXTINGUISHING | EXTINGUISHING | EXTINGUISHING |
| FSSA | ANSLR R102 | RESTROOM | 1ST FLOOR | 22 | CONTINUOUS | FUSIBLE LINK | NO | NO | NO | NO | NO |

FIRE SYSTEM INFORMATION AND LOGS

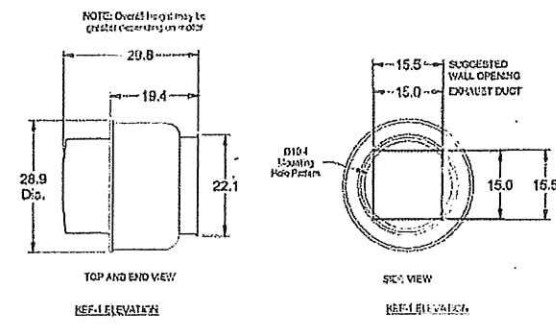
FULL INSTALLATION (INCLUDED THE TYPED HOODS) WITH DETECTION AND FACTORY COORDINATED NOTALS
 CHOICE OBSERVED FOR FACTORY FINISHED APPLIANCES GROUP - INCLUDED
 METAL DISCHARGE PIPES - INCLUDED
 GAS VALVE - INCLUDED - MECHANICAL SHUTOFF VALVE - 2 IN (ANSLR) PART # 5510
 HOOD SUFFICIENT - INCLUDED - 6 GAL. (210 TONS)
 REMOVE FULL CATION - 0.75" DIA - INSTALLATION AT SINGLE POINT OF EGRESS



| COMMON INFORMATION | | | | | | | | | | | |
|--------------------|-------|------------------------|--------|-------------------|------------------------|--------|-------|-------|----|------|------|
| MARK | MODEL | LOCATION | TYPE | USE / APPLICATION | LOCATION | TYPE | VOLTS | PHASE | HP | TYPE | TYPE |
| 4CC | 4CC | CHIEF - LEFT END OF FH | SWITCH | SWITCH | CHIEF - LEFT END OF FH | SWITCH | 208 | 3 | 1 | 1 | 1 |

CONTROL FEATURES

1 STARTER PROVIDED IN CONTROL PANEL - QTY 2
 2 POSITION LIGHT SWITCH - QTY 1
 3 POSITION FAN SWITCH - QTY 1
 - FACTORY MOUNTED EXHAUST TEMPERATURE SENSORS - QTY 2
 TUSH ON EXHAUST TRIP FIRE POWER FOR DRIFT TRIP
 THERMAL OVERLOAD PROTECT



ANSLR R102 (WET CHEMICAL) FIRE PROTECTION SYSTEM - MODEL FSSC

CONTROL PANEL

1. STARTER PROVIDED IN CONTROL PANEL - QTY 2
 2. POSITION LIGHT SWITCH - QTY 1
 3. POSITION FAN SWITCH - QTY 1
 4. FACTORY MOUNTED EXHAUST TEMPERATURE SENSORS - QTY 2
 TUSH ON EXHAUST TRIP FIRE POWER FOR DRIFT TRIP
 THERMAL OVERLOAD PROTECT

NOT TO SCALE

NOTES:

1. ALL ELECTRICAL CONNECTIONS SHALL BE AS PER THE DETAIL SHEET FOR THE HOOD. ALL ELECTRICAL CONNECTIONS SHALL BE AS PER THE DETAIL SHEET FOR THE HOOD.
 2. ALL ELECTRICAL CONNECTIONS SHALL BE AS PER THE DETAIL SHEET FOR THE HOOD.
 3. ALL ELECTRICAL CONNECTIONS SHALL BE AS PER THE DETAIL SHEET FOR THE HOOD.
 4. ALL ELECTRICAL CONNECTIONS SHALL BE AS PER THE DETAIL SHEET FOR THE HOOD.
 5. ALL ELECTRICAL CONNECTIONS SHALL BE AS PER THE DETAIL SHEET FOR THE HOOD.
 6. ALL ELECTRICAL CONNECTIONS SHALL BE AS PER THE DETAIL SHEET FOR THE HOOD.
 7. ALL ELECTRICAL CONNECTIONS SHALL BE AS PER THE DETAIL SHEET FOR THE HOOD.
 8. ALL ELECTRICAL CONNECTIONS SHALL BE AS PER THE DETAIL SHEET FOR THE HOOD.
 9. ALL ELECTRICAL CONNECTIONS SHALL BE AS PER THE DETAIL SHEET FOR THE HOOD.
 10. ALL ELECTRICAL CONNECTIONS SHALL BE AS PER THE DETAIL SHEET FOR THE HOOD.
 11. ALL ELECTRICAL CONNECTIONS SHALL BE AS PER THE DETAIL SHEET FOR THE HOOD.
 12. ALL ELECTRICAL CONNECTIONS SHALL BE AS PER THE DETAIL SHEET FOR THE HOOD.
 13. ALL ELECTRICAL CONNECTIONS SHALL BE AS PER THE DETAIL SHEET FOR THE HOOD.
 14. ALL ELECTRICAL CONNECTIONS SHALL BE AS PER THE DETAIL SHEET FOR THE HOOD.
 15. ALL ELECTRICAL CONNECTIONS SHALL BE AS PER THE DETAIL SHEET FOR THE HOOD.
 16. ALL ELECTRICAL CONNECTIONS SHALL BE AS PER THE DETAIL SHEET FOR THE HOOD.
 17. ALL ELECTRICAL CONNECTIONS SHALL BE AS PER THE DETAIL SHEET FOR THE HOOD.
 18. ALL ELECTRICAL CONNECTIONS SHALL BE AS PER THE DETAIL SHEET FOR THE HOOD.
 19. ALL ELECTRICAL CONNECTIONS SHALL BE AS PER THE DETAIL SHEET FOR THE HOOD.
 20. ALL ELECTRICAL CONNECTIONS SHALL BE AS PER THE DETAIL SHEET FOR THE HOOD.
 21. ALL ELECTRICAL CONNECTIONS SHALL BE AS PER THE DETAIL SHEET FOR THE HOOD.
 22. ALL ELECTRICAL CONNECTIONS SHALL BE AS PER THE DETAIL SHEET FOR THE HOOD.
 23. ALL ELECTRICAL CONNECTIONS SHALL BE AS PER THE DETAIL SHEET FOR THE HOOD.
 24. ALL ELECTRICAL CONNECTIONS SHALL BE AS PER THE DETAIL SHEET FOR THE HOOD.
 25. ALL ELECTRICAL CONNECTIONS SHALL BE AS PER THE DETAIL SHEET FOR THE HOOD.
 26. ALL ELECTRICAL CONNECTIONS SHALL BE AS PER THE DETAIL SHEET FOR THE HOOD.
 27. ALL ELECTRICAL CONNECTIONS SHALL BE AS PER THE DETAIL SHEET FOR THE HOOD.
 28. ALL ELECTRICAL CONNECTIONS SHALL BE AS PER THE DETAIL SHEET FOR THE HOOD.
 29. ALL ELECTRICAL CONNECTIONS SHALL BE AS PER THE DETAIL SHEET FOR THE HOOD.
 30. ALL ELECTRICAL CONNECTIONS SHALL BE AS PER THE DETAIL SHEET FOR THE HOOD.
 31. ALL ELECTRICAL CONNECTIONS SHALL BE AS PER THE DETAIL SHEET FOR THE HOOD.
 32. ALL ELECTRICAL CONNECTIONS SHALL BE AS PER THE DETAIL SHEET FOR THE HOOD.
 33. ALL ELECTRICAL CONNECTIONS SHALL BE AS PER THE DETAIL SHEET FOR THE HOOD.
 34. ALL ELECTRICAL CONNECTIONS SHALL BE AS PER THE DETAIL SHEET FOR THE HOOD.
 35. ALL ELECTRICAL CONNECTIONS SHALL BE AS PER THE DETAIL SHEET FOR THE HOOD.
 36. ALL ELECTRICAL CONNECTIONS SHALL BE AS PER THE DETAIL SHEET FOR THE HOOD.
 37. ALL ELECTRICAL CONNECTIONS SHALL BE AS PER THE DETAIL SHEET FOR THE HOOD.
 38. ALL ELECTRICAL CONNECTIONS SHALL BE AS PER THE DETAIL SHEET FOR THE HOOD.
 39. ALL ELECTRICAL CONNECTIONS SHALL BE AS PER THE DETAIL SHEET FOR THE HOOD.
 40. ALL ELECTRICAL CONNECTIONS SHALL BE AS PER THE DETAIL SHEET FOR THE HOOD.
 41. ALL ELECTRICAL CONNECTIONS SHALL BE AS PER THE DETAIL SHEET FOR THE HOOD.
 42. ALL ELECTRICAL CONNECTIONS SHALL BE AS PER THE DETAIL SHEET FOR THE HOOD.
 43. ALL ELECTRICAL CONNECTIONS SHALL BE AS PER THE DETAIL SHEET FOR THE HOOD.
 44. ALL ELECTRICAL CONNECTIONS SHALL BE AS PER THE DETAIL SHEET FOR THE HOOD.
 45. ALL ELECTRICAL CONNECTIONS SHALL BE AS PER THE DETAIL SHEET FOR THE HOOD.
 46. ALL ELECTRICAL CONNECTIONS SHALL BE AS PER THE DETAIL SHEET FOR THE HOOD.
 47. ALL ELECTRICAL CONNECTIONS SHALL BE AS PER THE DETAIL SHEET FOR THE HOOD.
 48. ALL ELECTRICAL CONNECTIONS SHALL BE AS PER THE DETAIL SHEET FOR THE HOOD.
 49. ALL ELECTRICAL CONNECTIONS SHALL BE AS PER THE DETAIL SHEET FOR THE HOOD.
 50. ALL ELECTRICAL CONNECTIONS SHALL BE AS PER THE DETAIL SHEET FOR THE HOOD.
 51. ALL ELECTRICAL CONNECTIONS SHALL BE AS PER THE DETAIL SHEET FOR THE HOOD.
 52. ALL ELECTRICAL CONNECTIONS SHALL BE AS PER THE DETAIL SHEET FOR THE HOOD.
 53. ALL ELECTRICAL CONNECTIONS SHALL BE AS PER THE DETAIL SHEET FOR THE HOOD.
 54. ALL ELECTRICAL CONNECTIONS SHALL BE AS PER THE DETAIL SHEET FOR THE HOOD.
 55. ALL ELECTRICAL CONNECTIONS SHALL BE AS PER THE DETAIL SHEET FOR THE HOOD.
 56. ALL ELECTRICAL CONNECTIONS SHALL BE AS PER THE DETAIL SHEET FOR THE HOOD.
 57. ALL ELECTRICAL CONNECTIONS SHALL BE AS PER THE DETAIL SHEET FOR THE HOOD.
 58. ALL ELECTRICAL CONNECTIONS SHALL BE AS PER THE DETAIL SHEET FOR THE HOOD.
 59. ALL ELECTRICAL CONNECTIONS SHALL BE AS PER THE DETAIL SHEET FOR THE HOOD.
 60. ALL ELECTRICAL CONNECTIONS SHALL BE AS PER THE DETAIL SHEET FOR THE HOOD.
 61. ALL ELECTRICAL CONNECTIONS SHALL BE AS PER THE DETAIL SHEET FOR THE HOOD.
 62. ALL ELECTRICAL CONNECTIONS SHALL BE AS PER THE DETAIL SHEET FOR THE HOOD.
 63. ALL ELECTRICAL CONNECTIONS SHALL BE AS PER THE DETAIL SHEET FOR THE HOOD.
 64. ALL ELECTRICAL CONNECTIONS SHALL BE AS PER THE DETAIL SHEET FOR THE HOOD.
 65. ALL ELECTRICAL CONNECTIONS SHALL BE AS PER THE DETAIL SHEET FOR THE HOOD.
 66. ALL ELECTRICAL CONNECTIONS SHALL BE AS PER THE DETAIL SHEET FOR THE HOOD.
 67. ALL ELECTRICAL CONNECTIONS SHALL BE AS PER THE DETAIL SHEET FOR THE HOOD.
 68. ALL ELECTRICAL CONNECTIONS SHALL BE AS PER THE DETAIL SHEET FOR THE HOOD.
 69. ALL ELECTRICAL CONNECTIONS SHALL BE AS PER THE DETAIL SHEET FOR THE HOOD.
 70. ALL ELECTRICAL CONNECTIONS SHALL BE AS PER THE DETAIL SHEET FOR THE HOOD.
 71. ALL ELECTRICAL CONNECTIONS SHALL BE AS PER THE DETAIL SHEET FOR THE HOOD.
 72. ALL ELECTRICAL CONNECTIONS SHALL BE AS PER THE DETAIL SHEET FOR THE HOOD.
 73. ALL ELECTRICAL CONNECTIONS SHALL BE AS PER THE DETAIL SHEET FOR THE HOOD.
 74. ALL ELECTRICAL CONNECTIONS SHALL BE AS PER THE DETAIL SHEET FOR THE HOOD.
 75. ALL ELECTRICAL CONNECTIONS SHALL BE AS PER THE DETAIL SHEET FOR THE HOOD.
 76. ALL ELECTRICAL CONNECTIONS SHALL BE AS PER THE DETAIL SHEET FOR THE HOOD.
 77. ALL ELECTRICAL CONNECTIONS SHALL BE AS PER THE DETAIL SHEET FOR THE HOOD.
 78. ALL ELECTRICAL CONNECTIONS SHALL BE AS PER THE DETAIL SHEET FOR THE HOOD.
 79. ALL ELECTRICAL CONNECTIONS SHALL BE AS PER THE DETAIL SHEET FOR THE HOOD.
 80. ALL ELECTRICAL CONNECTIONS SHALL BE AS PER THE DETAIL SHEET FOR THE HOOD.
 81. ALL ELECTRICAL CONNECTIONS SHALL BE AS PER THE DETAIL SHEET FOR THE HOOD.
 82. ALL ELECTRICAL CONNECTIONS SHALL BE AS PER THE DETAIL SHEET FOR THE HOOD.
 83. ALL ELECTRICAL CONNECTIONS SHALL BE AS PER THE DETAIL SHEET FOR THE HOOD.
 84. ALL ELECTRICAL CONNECTIONS SHALL BE AS PER THE DETAIL SHEET FOR THE HOOD.
 85. ALL ELECTRICAL CONNECTIONS SHALL BE AS PER THE DETAIL SHEET FOR THE HOOD.
 86. ALL ELECTRICAL CONNECTIONS SHALL BE AS PER THE DETAIL SHEET FOR THE HOOD.
 87. ALL ELECTRICAL CONNECTIONS SHALL BE AS PER THE DETAIL SHEET FOR THE HOOD.
 88. ALL ELECTRICAL CONNECTIONS SHALL BE AS PER THE DETAIL SHEET FOR THE HOOD.
 89. ALL ELECTRICAL CONNECTIONS SHALL BE AS PER THE DETAIL SHEET FOR THE HOOD.
 90. ALL ELECTRICAL CONNECTIONS SHALL BE AS PER THE DETAIL SHEET FOR THE HOOD.
 91. ALL ELECTRICAL CONNECTIONS SHALL BE AS PER THE DETAIL SHEET FOR THE HOOD.
 92. ALL ELECTRICAL CONNECTIONS SHALL BE AS PER THE DETAIL SHEET FOR THE HOOD.
 93. ALL ELECTRICAL CONNECTIONS SHALL BE AS PER THE DETAIL SHEET FOR THE HOOD.
 94. ALL ELECTRICAL CONNECTIONS SHALL BE AS PER THE DETAIL SHEET FOR THE HOOD.
 95. ALL ELECTRICAL CONNECTIONS SHALL BE AS PER THE DETAIL SHEET FOR THE HOOD.
 96. ALL ELECTRICAL CONNECTIONS SHALL BE AS PER THE DETAIL SHEET FOR THE HOOD.
 97. ALL ELECTRICAL CONNECTIONS SHALL BE AS PER THE DETAIL SHEET FOR THE HOOD.
 98. ALL ELECTRICAL CONNECTIONS SHALL BE AS PER THE DETAIL SHEET FOR THE HOOD.
 99. ALL ELECTRICAL CONNECTIONS SHALL BE AS PER THE DETAIL SHEET FOR THE HOOD.
 100. ALL ELECTRICAL CONNECTIONS SHALL BE AS PER THE DETAIL SHEET FOR THE HOOD.

Thomas E. Lovelace
 Mechanical Engineering
 2423 South Drive
 Raymond, TN 38051
 Phone: (901) 229-3301
 Fax: (901) 229-3301

HOOD DETAILS
elling and associates
 5339 L-55 NORTH, STE. 1108
 JACKSON, MISS. 39206-1141
 PHONE AND FAX 601-713-8993
 E-MAIL: ellings@usa.net
 ALL INFORMATION IS UNCLASSIFIED UNLESS INDICATED OTHERWISE

FRESH MARKET CAFE
 Greenfield Road, Brandon MS

DATE: 1/11/01
 DRAWN: JEL
 CHECKED: JEL
 SCALE: 1/4" = 1'-0"

M-2





1 200 1 100 100



FRESH MARKET CAFE



10/20/2023 10:51 AM



Fresh Market Cafe





PLEASE
ORDER
HERE

| DAILY ENTREE PLATES | |
|--|------|
| • Roasted Chicken | 8.95 |
| • Braised Pot Roast | 9.95 |
| • Angus Chopped Steak <small>(with or without meat green)</small> | 8.95 |
| • Applesauce, Baked, Wrapped Meatloaf <small>(with cheddar cheese)</small> | 8.95 |
| • Homestyle Chicken & Dumplings | 8.95 |
| • Oven Roasted Tilapia | 8.95 |
| • Hand-Breaded Chicken Tenders | 7.95 |
| • 1/2 Delta River Raised Southern Fried Catfish | 9.95 |
| • Hot Orleans Style Red Beans & Rice <small>(with andouille sausage)</small> | 7.95 |

| DAILY VEGETABLES | |
|--------------------------|---------------------|
| • Mashed Potatoes | • Corn Souffle |
| • Fried Okra | • Macaroni & Cheese |
| • Green Beans | • Steamed Cabbage |
| • Baby Lima Beans | • Steamed Squash |
| • Black Eyed Peas | • Steamed Broccoli |
| • Steamed Carrots | • Turnip Greens |
| • Sweet Potato Casserole | |

| Homemade BREADS | |
|---------------------------|--|
| • Iron Skillet Cornbread | |
| • Mexican Cornbread | |
| • Fresh Baked Yeast Rolls | |

| KIDS' PLATES | |
|---------------------------|------|
| • Two Chicken Tenders | 4.99 |
| • Chicken & Dumplings | 4.99 |
| • One Fried Catfish Plate | 4.99 |
| • Three Veggie Plate | 4.99 |

| DAILY FEATURE PLATES | |
|----------------------|--|
| SUNDAY | Chicken Tetrazzini 8.95 |
| MONDAY | Hand-Breaded Country-Fried Steak <small>Caramelized onions & pepper gravy upon request</small> 8.95 |
| TUESDAY | Southern Fried Center Cut Pork Chop 8.95 |
| WEDNESDAY | Enjin Iron Skillet Blackened Catfish 9.95 |
| THURSDAY | Sauteed Tilapia 9.75 |
| FRIDAY | Salmon Croquettes 8.75 |

| BEVERAGES | |
|---------------|-----------------------|
| • Soft Drinks | Community Coffee 1.50 |

| Homemade DESSERTS | |
|-----------------------|------|
| • Southern Biscuits | |
| • Pecan Pie | 2.95 |
| • Lemon Chess Pie | 2.95 |
| • Chocolate Chess Pie | 2.95 |
| • Banana Pudding | 2.95 |



1. The building is a brick structure with a sign that reads "FRESH MARKET CAFE". The building has large glass windows and a central glass door. There are several outdoor tables and chairs set up on the sidewalk in front of the building. The building is surrounded by a parking lot and some trees in the background.

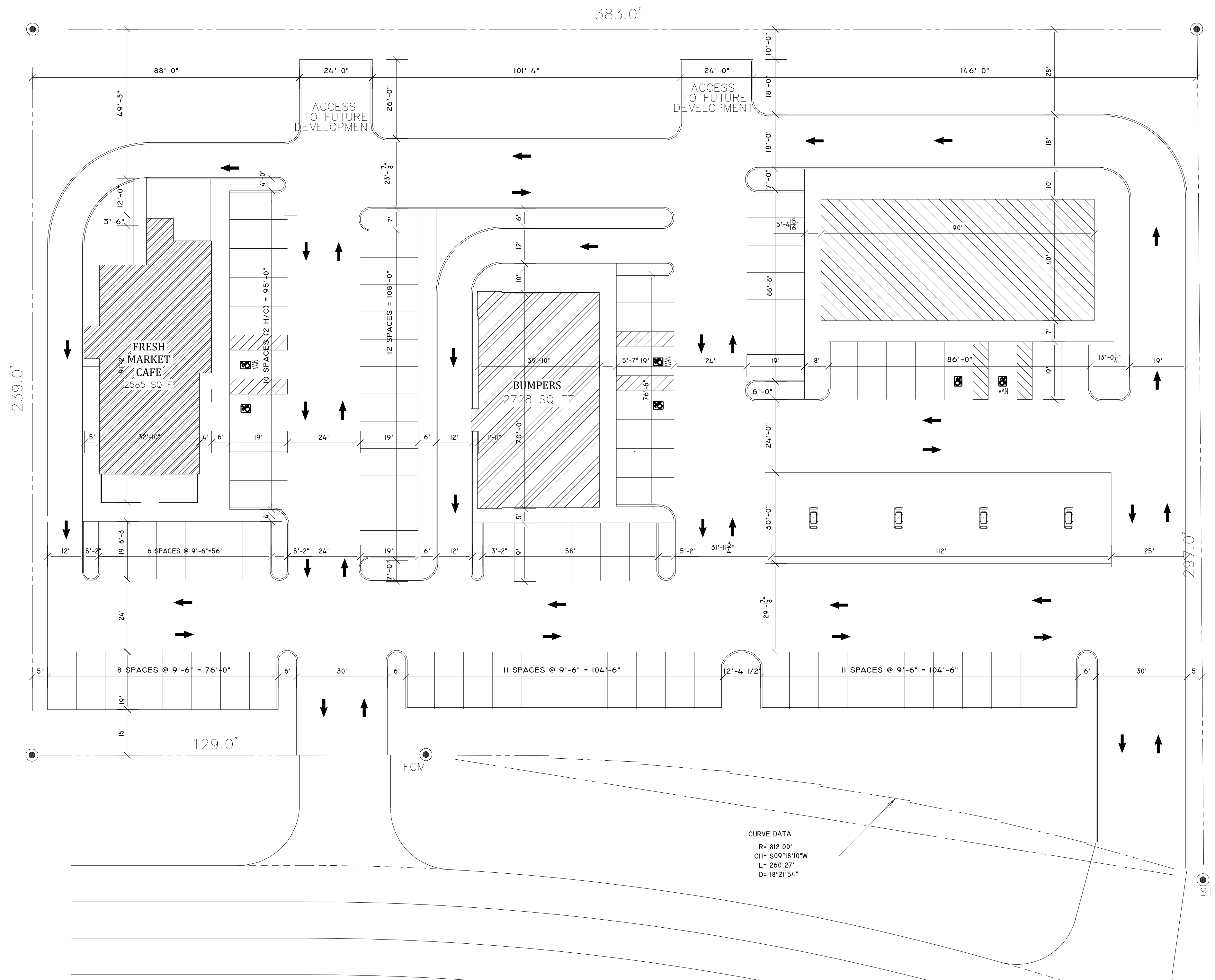












SITE PLAN
SCALE 1" = 20'-0"

NOTE:
ALL PARKING SPACES ARE 9.5 FEET WIDE BY 19 FEET LONG
86 TOTAL SPACES

PROJECT NO: 21.18
SHEET NO: C1 OF

CALHOUN STATION PARKWAY
GLUCKSTADT, MISSISSIPPI

E. Lantz Kuykendall, RA
Architect
5127 Reddoch Dr.
Jackson, Mississippi 39211
(601)214-1824

DATE: 7/26/2021
DRAWN: CLK
DESIGNED: CLK
CHECKED: CLK
REVISED:

Professional Engineer Seal for E. Lantz Kuykendall, State of Mississippi, License No. 1786, Expiration 12/31/2024.